

Gainesway Pond Restoration and Trail Project

project description | education/environmental restoration

location

Lexington, Kentucky

client

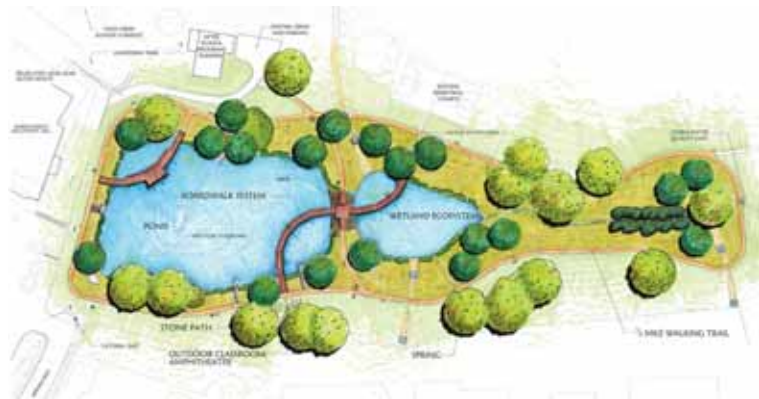
Lexington-Fayette Urban
County Government

completion

2008

budget

\$1,200,000



The Gainesway Retention Basin is an existing storm water pond that was used extensively in the past for fishing and recreation. However, the pond has been degraded by years of unabated erosion and nonpoint source pollution in the upstream watershed and subsequently filled with eroded sediment. One of the objectives of the project was to improve the water quality within the Gainesway Pond by removing the sediment and installing Best Management Practices (BMP's) that remove or prevent pollution before it enters the pond. The second objective was to demonstrate the various BMP's used to protect water quality to the public. The pond is located next to Tates Creek Schools (K-12) and will be used by students as an environmental classroom and laboratory throughout the year.

The project consists of several BMP's to improve water quality including: cleaning the sediment and trash from the pond, installing a storm water gross pollutant trap to remove large solids and trash from the stream, constructing a wetlands to remove nutrients and suspended solids from the water before it enters the pond, installing a riparian buffer around the pond and entering stream, and replacing concrete ditches with vegetated swales. Amenities will be added to improve access to the site and enhance the visitor's experience such as: a walking trail around the pond, boardwalks over the pond and wetlands, and an educational trail with interpretive signage that follows the flow of water as it is cleaned before it enters the pond.



project components

- Water quality BMP designs
- Educational signage/design
- Submitted application for Section 319 funding
- Held public meetings to involve stakeholders, neighboring businesses, social organizations, and civic groups