

Dry Run Watershed Land Use BMP Education Project

project description | watershed

location

Georgetown, Kentucky

client

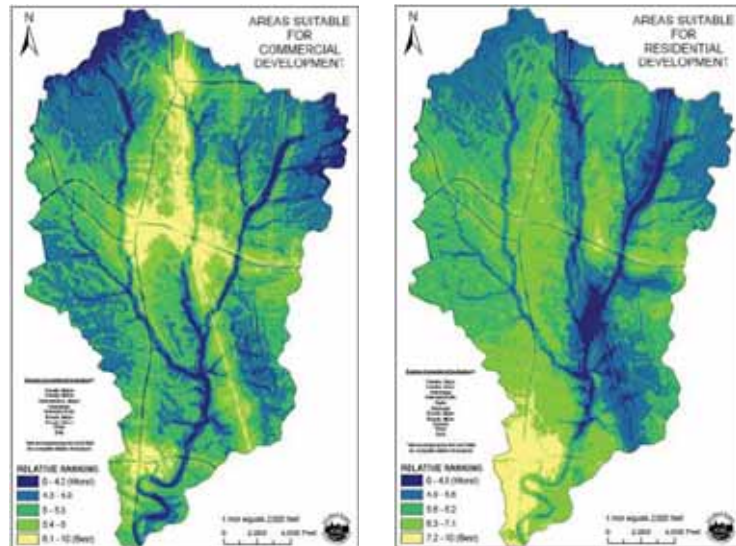
Georgetown/Scott County
230 East Main Street
Georgetown, KY 40324

completion date

2009

budget

\$290,000



CDP Engineers, Inc. helped obtain an EPA 319 (h) grant to help fund a project to evaluate and prevent future development impacts to stream water quality, hydrology, and habitat in the Dry Run watershed. The Dry Run stream is a tributary of North Elkhorn Creek, a significant community resource, and encompasses a variety of urban and rural regions.

This project began in 2005 and will continue for a five year period. A significant portion of the project will be presentations and publications targeted toward educating other municipalities and design professionals on the key goals of the project. In 2005, CDP surveyed and assessed over 22 miles of streams in the Dry Run Watershed.

project components

- Reduce or prevent Nonpoint Source (NPS) pollution in the developing watersheds throughout Kentucky
- Reduce or prevent NPS pollution in the developing Dry Run Watershed in Scott County to serve as a case study for goal 1.
- Land Use Decision Makers educated on the tools and processes available during the Land Use Decision process to prevent or reduce NPS pollution caused by urbanization.
- Survey and water quality assessment of over 20 miles of blue line stream.
- Watershed characterization and assessment.
- Hydrologic and pollutant modeling of 8500 acre watershed using XPSWMM.
- Development of the Dry Run Small Area Plan for future planning and zoning.